

Learn on Demand

by Margaret Glasgow, BSN, RNC-OB



ANGELS Modules from Patients Learn: June-Present

Activity Title	# of Participants June-Present
Breastfeeding 101	2
Childbirth Education	3
Cord Blood Banking	2
Folic Acid in Pregnancy	1
WIN: Gestational Diabetes Overview	28
WIN: Gestational Diabetes Overview (SPANISH)	3
WIN: Management of Hyperglycemia in Pregnancy	23
WIN: Management of Hyperglycemia in Pregnancy (SPANISH)	2
WIN: Preventing Type 2 Diabetes	14
WIN: Preventing Type 2 Diabetes (SPANISH)	0

UPCOMING COURSES FOR ANGELS

STABLE Course - December 10th, 7:30am – 4:00pm

Please contact cdheducation@uams.edu with questions.

ANGELS provides a variety of free continuing education events for Arkansas's health care providers. Many of our offerings provide continuing medical and continuing nursing education. Contact CDHeducation@uams.edu to schedule an OB Simulation drill, fetal heart monitoring course and/or NRP certification/recertification at your hospital.

Examples of and links to CME/CE available via telehealth:



<https://learnondemand.org/default.aspx>

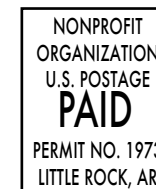
<https://learnondemand.org/Activity/2598513/Detail.aspx>

Arkansas e-Link continues to work toward obtaining funds through the Healthcare Connect Fund (HCF) for the e-Link Consortium (for those that qualify per HCF eligibility requirements).

If you'd like to discuss what others are doing or have ideas to further leverage the e-Link network, email us at arkansaselink@uams.edu or call 501-603-1280.

To find out where Arkansas Telehealth sites are located in each county, go to <http://telehealth.uamsweb.com/telemedicine-in-your-town/>

University of Arkansas for Medical Sciences
4301 W. Markham St., #518
Little Rock, AR 72205-7199



the ANGELS REPORT

JUNE, JULY AND AUGUST 2015

ANTENATAL & NEONATAL GUIDELINES, EDUCATION AND LEARNING SYSTEM



Daycare Decisions

by Shannon Graham, APRN



Many people who have children are employed or seeking to further their education for the betterment of their family. For these families, one of the hardest decisions to make is who will care for your child when you are away at work or school. The following is meant to outline some of the things to consider when choosing a daycare and resources that are available to parents/guardians to help make this decision.

Research:

Once you have identified what would be in the best interest of your family and meet your needs, you should move on to your research. The Arkansas Department of Health website is a great resource for parents looking at daycares and home care programs in their area. To start with, they have a directory that parents and guardians can use to find out which facilities or care programs are in their area. This directory can be accessed at <http://arbetterbeginnings.com/parents-families/how-choose-child-care/how-find-child-care/find-child-care>. You can input your town and then select options that meet your needs: open after 7pm or weekends, take childcare vouchers, offer Head Start programs, and/or offer Better Beginnings pre-k classes. This site will then provide a list of care providers in the specified area and hyperlinks to individual providers. You will be able to see when they have been inspected, if they have any complaints, hours of operation, how many kids are usually in each class, and tuition/fees. If you don't have internet access, you can also call the Arkansas Department of Health at 1-800-445-3316 for help getting any of this information.

Once you have reviewed all of the provider options in your area, pick the ones that meet your family's needs and start calling each facility. Some providers may not have immediate openings and that may affect your decision. I would confirm the providers'

hours of operation, tuition/fees for your child, if they take vouchers when needed, and confirm how many children are in the class your child would join to determine if it is larger or smaller than you would like.

The next step would be to get social. We live in the time of social media. I used social media as a way to find out what kind of experiences other people have had in my area. I started off asking which daycare providers in my town people have liked or not liked. After that, I contacted those who responded by phone or email to find out what they did or did not like about these sites/care providers.

Visit:

After you feel you have answers to all of your questions, I would next visit the daycare or home care centers you are seriously considering. I would not schedule this visit. If a facility has nothing of concern, they should be ready at any time to tour a family and answer questions. If you want help with important things to look at and ask on your tour, the Arkansas Department of Health website has a Choosing Child care Checklist (<http://arbetterbeginnings.com/parents-families/how-choose-child-care/choosing->

continued on page 3

Arkansas e-Link Update

by Brenda Pick, Project Manager BA



LINKING HEALTH, EDUCATION, RESEARCH AND PUBLIC SAFETY



ANGELS is proud to introduce Margaret Glasgow, RNC-OB, to all of our sites around the state. Margaret has been the Clinical Services Manager since last fall and has been busy traveling the state conducting training and providing education to obstetrical facilities.

Margaret and her mannequin, Victoria, typically hold four classes each month at different obstetrical facilities that have requested training. Victoria can simulate all manner of obstetrical emergencies, giving participants "hands on" experience in a simulated medical situation.

Margaret says, "This is important because it's free to the staff and we come to them to make sure they have the best training possible in their own work environment. It's our goal to make sure all Arkansas mothers and infants receive the highest quality care available to achieve the best possible outcomes."

Margaret started at UAMS in July of 1995 on Labor in Delivery after graduating from the UAMS College of Nursing. Throughout her tenure in the Maternal Infant Division, Margaret provided education to UAMS staff through a variety of formats.



ANGELS Receive Awards

by Tina Pilgreen, MS



One of our very own ANGELS, Jeni Warrior, APN was recently honored at the Arkansas Action Coalitions' 40 Under 40 Nursing Celebration on June 5th. Warrior received an award identifying her as one of a select group of 40 incredible nurses in Arkansas under the age of 40 who have shown a commitment for excellence in nursing practice, dedication to the nursing profession, dedicated service to the Arkansas' population and the promise to grow in leadership for the advancement of nursing in Arkansas.

Jeni Warrior has always had a passion for taking care of mothers and their babies and has worked very diligently in her career to pursue her dreams. In 2012, she began working at UAMS in an advanced nursing role to practice service and outreach in the field she is so passionate about. She currently performs genetics ultrasounds and colposcopies and sees mostly high-risk obstetrical patients in outpatient clinics. In addition, she dedicates some of her personal time to helping out at a

local clinic that provides women's health to the Hispanic community. And, her passion for service and education is what excited her most about working with ANGELS, she said "I was drawn to the program because it meets the needs of those not being taken care of, the underserved population".

To all those that come in contact with Jeni, it is clear she possesses a generous, unselfish character. She focuses on other people more than anything else and approaches her work and life as a team member—one of many who work together to support and care for each other. When asked how she felt about receiving the award, she humbly replied, "I am just honored and grateful, it could have gone to any of the APNs I work with".

Congratulations Jeni and thank you for your leadership, dedication and service to Arkansas families!



From left: Claudia Beverly, PhD, RN, FAAN, Director, UAMS Hartford Center of Geriatric Nursing Excellence, Jeni Warrior, APN, and Sue Tedford, MNSc, RN, Executive Director, AR State Board of Nursing



Daycare Decisions continued from page 1

appropriate-child-care/choosing-child-care) that you can print or email to yourself so that you have it for your tour.

When you first walk in, take in your first impressions. Is it calm or hectic, is there is crying heard in the background, and is it clean? Then I would go to the office of the care provider, inform him or her you are considering their facility for your child's care, and ask for a tour. If your child is old enough to interact, I would bring them as well to see how they interact with the other children and the classroom leader. When you enter the class that would be your child's, is it calm and organized with the classroom leader in control or is it wild and loud with an inattentive classroom leader? Are the children playing well with one another with ample and age-appropriate toys or fighting over a few? Ask the classroom leader about the structure of the daily activities and discipline methods. Explore the playground area. Is the equipment safe and well maintained? Is there a fence around it to keep kids from wandering off and others from getting in unannounced? Is staff trained in CPR and first aid? If there is a pre-k class, how are the lesson plans made and what is the education level of those who provide this education? What kind of security is in place? This visit can make all the difference in your comfort with the provider, home or facility. If you took your child with you, sit down with them when you get home and ask them what they thought.

References

Arkansas Department of Health. (2013). Choosing Child Care Checklist. Retrieved from <http://arbetterbeginnings.com/parents-families/how-choose-child-care/choosing-appropriate-child-care/choosing-child-care>.

Arkansas Department of Health. (2013). Find Child Care. Retrieved from <http://arbetterbeginnings.com/parents-families/how-choose-child-care/how-find-child-care/find-child-care>.

Pediatric Report

by Shannon Lewis, RN, BSN, Medical Services Administrator



Peds PLACE (Physician Learning and Collaborative Education)

Peds PLACE is an interactive weekly pediatric teleconference jointly sponsored by the University of Arkansas for Medical Sciences and Arkansas Children's Hospital. Peds PLACE is a convenient way for physicians to collaborate on everyday pediatric topics. Not only do we have presenters from ACH and UAMS, but also physicians from out of state locations to speak on topics of their expertise. For example, our June 4th presentation was a co-presentation between two different far-site locations. Dr. Jim Taylor, Univ. of Washington and Dr. Elizabeth Simpson, Children's Mercy (Kansas City) presented "Discrepancies between Transcutaneous and Serum Bilirubin Measurement." Join us every Thursday from 12:10-1:10 CST. Peds PLACE offers 1.0 hour of free CME.

Telenursery

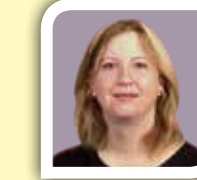
led by Dr. R. Whit Hall, professor in Neonatology

- Connects via telemedicine at 8:15 am on M/W/F for a brief census rounds
- Facilitates neonatal transports and back transports
- Neonatal consults as requested. Sub-specialty consults can be arranged
- Follow up reported on your transported maternal patient and/or neonate
- Best practice discussions
- Promoting regionalization of care
- Mother/baby video connection; connect your maternal patient to her neonate that was transported to Arkansas Children's Hospital
- Tele-intubation studies and community opportunities coming soon



Arkansas Fetal Diagnosis and Management Program Update

by Shannon Barringer, MS, CGC, Program Manager, Arkansas Reproductive Genetics Program/ANGELS



The Arkansas Fetal Diagnosis and Management Program (AFDM) enrolled 87 new families into our program during the summer of 2015. These families are carrying babies with birth defects or genetic diseases requiring specialized case management and intervention. We have especially been involved with those families whose babies have died as a result of their birth defects or other conditions. UAMS participated in the annual Race to Remember in Little Rock, a 5K run/walk in June designed to raise awareness and money to help support those who have suffered such losses. In addition, members of our team are working as lead organizers for this fall's statewide Infant and Perinatal Loss Remembrance Event at the AR state capitol.

In addition, we would like to highlight examples of AFDM's care of some of our families this Summer:

- An especially difficult-to-manage diagnosis of a fetal cardiac arrhythmia, which has required multiple hospitalizations for the mother. The team of cardiologists and maternal-fetal medicine specialists have tried many doses of different medications designed to slow the baby's heart rate down. She has multiple appointments weekly and is even being monitored by our SARA research study, which uses magnets to further delineate fetal cardiac activity.
- A family who has suffered the loss of four pregnancies with no known cause. We are going on a diagnostic odyssey with this family, as we try to pinpoint possible reasons for their losses. This includes performing some of the most cutting-edge genetic testing available in medicine to date.
- We are currently providing care for over 10 twin pregnancies in which one or both of the babies has a birth defect or genetic condition.